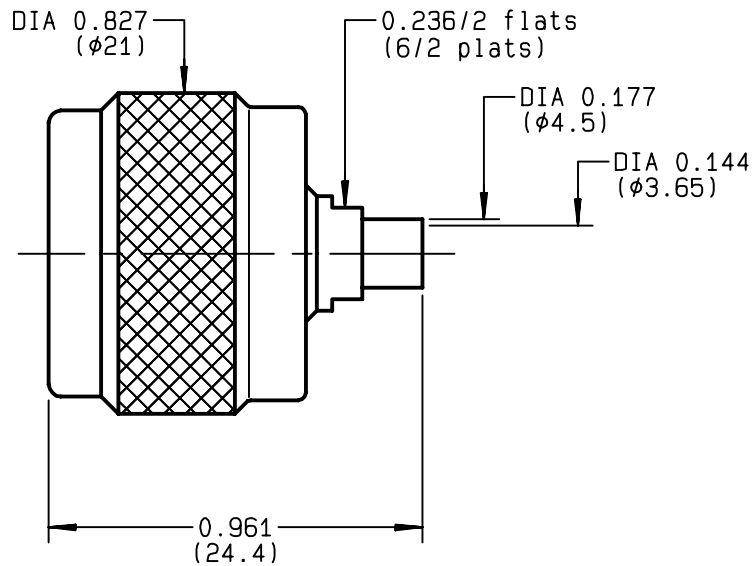


**STRAIGHT PLUG SOLDER TYPE
CABLE .141**

R161.051.007
SERIES N



| | | |
|---------------------------------|----------------------------------|---|
| NOMINAL IMPEDANCE | 50 Ω | CABLES : KS 2 RG 402 |
| FREQUENCY RANGE | 0-11 GHz | |
| TEMPERATURE RATING | -55/+105 °C | |
| V.S.W.R | 1.15 + x F(GHz)Maxi | |
| RF INSERTION LOSS | 0.048 √F(GHz) dB Maxi | |
| VOLTAGE RATING | 335 Veff Maxi | |
| DIELECTRIC WITHSTANDING VOLTAGE | 1000 Veff Mini | |
| INSULATION RESISTANCE | 5000 MΩMini | |
| HERMETIC SEAL | NA Atm.cm ³ /s | |
| LEAKAGE (pressurized only) | NA | |
| MECHANICAL DURABILITY | 500 Cycles | OTHERS CHARACTERISTICS |
| WEIGHT | 24.1 gr | CABLE RETENTION 500 N Mini |
| SPECIFICATION | | CENTER CONTACT RETENTION |
| | | Axial force - mating end NA N Mini |
| | | Axial force - opposite end NA N Mini |
| | | Torque NA cm.N Mini |
| | | RECOMMENDED TORQUES |
| | | Mating 130 cm.N |
| | | Panel nut NA cm.N |
| | | Clamp nut NA cm.N |

| CONNECTOR PARTS | MATERIALS | FINISH | (all values are given) in micrometers |
|-----------------|-----------------|------------------------|---|
| BODY | BRASS | BBR 2 | |
| OUTER CONTACT | | | |
| CENTER CONTACT | BRASS | GOLD 0.5 OVER NICKEL 2 | |
| INSULATOR | PTFE | - | |
| GASKET | SILICONE RUBBER | - | |
| OTHERS PIECES | BRASS | BBR 2 | |

| | | |
|----------------|-------------------|--------------------|
| ISSUE | CREATION DATE | FILE PART-NUMBER |
| 9834F00 | 11/03/1997 | 97-0132-077 |



LELEU

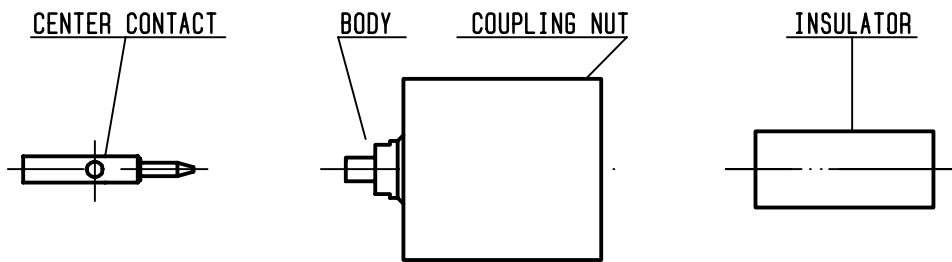
The information given here is subject to change without notice.
Design changes may be in order to improve the product .

Connect to the future



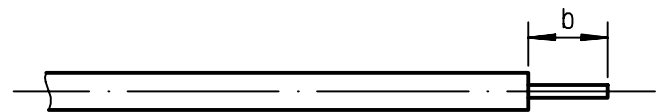
R161.051.007

ISSUE **9834F00** SERIES **N**



①

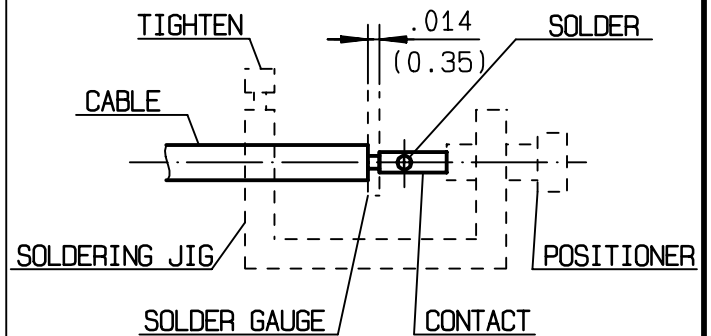
Take the tool kit : R 282 125 010 .
Strip the dielectric of the cable .
Stripping tool cable : R 282 053 .
Trimmer : R 282 066 010 .
Clean the cable .
-



| Stripping | a | b | c | d | e |
|-----------|---|---------|---|---|---|
| inch | 0 | 0.177 0 | 0 | 0 | 0 |
| mm | | 4.5 | | | |

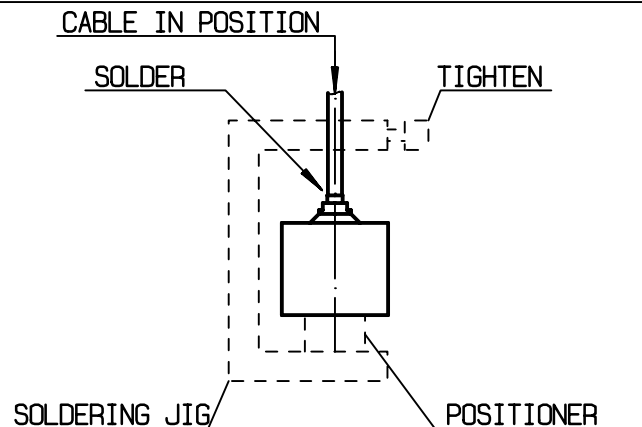
②

Screw the positioner R 282 744 261 onto the soldering jig R 282 740 030 .
Slide contact into positioner .
Insert solder gauge R 282 862 070 between contact and cable .
Tighten and solder the contact .



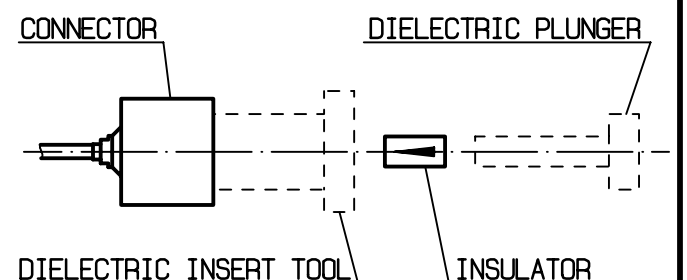
③

After cooling remove cable assembly from the jig .
Screw positioner R 282 744 340 into the connector .
Slide cable into the connector until it bottoms against positioner R 282 744 340 .
Tighten .
Put 3 rings of solder around the cable and solder .



④

After cooling remove cable assembly from the jig .
Screw female dielectric insert tool onto connector and cut the excess of dielectric with the dielectric recess tool R282 915 030 .
Insert insulator with the dielectric plunger .
Dielectric insert tool and dielectric plunger : R282 730 161 .



LELEU